



Wyndham Park
Nursery School

Our Newsletter

Autumn Term

2025

EXCITE
ENGAGE
EDUCATE





Wyndham Park
Nursery School

I would like to introduce myself to the new families that have joined us, as Head of School. My name is Holly and I am delighted and feel very privileged to be part of the wonderful team here at Wyndham Park Nursery School.

I am passionate about ensuring that all children receive a high-quality education which is enjoyable, enriching, challenging and nurturing. I look forward to using my experience, passion and knowledge to support the team in continuing to make Wyndham Park Nursery School the special place that it is.

I shall be making myself as visible as possible and will often be on the school gate at the beginning of the day should you wish to come and say 'hello'. If you have any worries, concerns or questions please do come and talk to myself or a member of the fantastic team.

We will be holding a parents evening before half term to keep you updated on how your child has settled in. You will have received a separate email explaining how to book an appointment. This will give you chance to speak to your one of your child's key workers; find out how your child has settled and discover the next steps of learning we will be working on together.

I hope that you are finding Tapestry useful and you are enjoying seeing what we will be learning during our group times. If you have not managed to log on yet, please come and see us so we can help.

If you ever have any worries, concerns or questions about your child then please don't wait until parents' evening. You can always speak to a member of the class team, or to myself, just catch us in the morning or at pick up or ring/email the office to book a mutually convenient time.

I look forward to meeting you all over the coming weeks and being part of the journey that your child takes through this amazing nursery school.



Holly Stock-Cheekooree
Head of School

I would like to welcome all of our families, old and new, to this academic year at Wyndham Park Nursery School. I feel extremely privileged to be the Executive Head Teacher at such a wonderful Nursery School. I know that at Wyndham Park we are lucky to have such committed staff that care for each child. I hope that your child has settled in to their new group well; I have certainly seen lots of happy smiley faces.



Laura Cook
Executive Head Teacher

Meet the Staff Team!

Explorers Staff Team



Sarah
Room Leader &
Admin Assistant



Jayne
Teaching Assistant



Laura
Executive Head
Teacher



Amanda
Senior
Administrator



Paul
Caretaker

Non-Classroom based Staff

Investigators Staff Team



Holly
Class Teacher &
Head of School



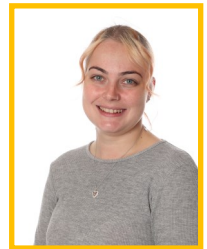
Abby
Room Leader



Leah
Childcare Assistant



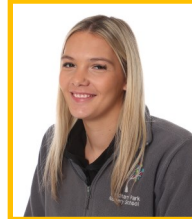
Cashlin
Apprentice
Childcare Assistant



Jess
Apprentice
Childcare Assistant



Pip
Childcare Assistant



Ella
Childcare Assistant



Driffa
SENCo

Adventurers Staff Team



Rebecca
Class Teacher AM



Georgina
Room Leader



Aga
Room Leader



Penny
Teaching Assistant



Jenny
Childcare Assistant



Toni
Childcare Assistant



Mimi
Apprentice
Childcare Assistant



Fenton
Apprentice
Childcare Assistant

Little Reminders!

- ☺ Please remember to label ALL of your child's belongings, including coats, bags, lunchboxes, drinks bottles and shoes with their full name. It is very easy for items to get muddled up especially when there are duplicates within the nursery!



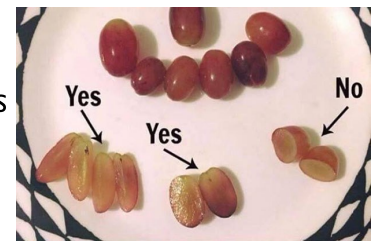
- ☺ If your child is toilet training, make sure they are wearing bottoms that they can pull up and down easily! Joggers are perfect instead of tights/leggings/trousers with buttons etc.

- ☺ Please do not send your child to nursery wearing jewellery as it could get lost or broken. Jewellery also creates a health & safety risk especially when children are using the climbing equipment.



- ☺ Please do not bring in toys from home, they are very easily lost and may pose a safety risk to other children.

- ☺ Please remember to cut foods such as grapes and tomatoes into quarters for lunchboxes as they are a choking hazard.



- ☺ Don't forget to let the office know by the start of the session if your child is not attending.

- ☺ Please can we politely ask that you do not collect your child from the office just before home time in order to avoid the queue. This pulls our admin staff away from their important work and disrupts the end of session group times.

Thank you

Pre-Loved Uniform

We have a small rail of pre-loved uniform in our entrance hall which is topped up throughout the year. All families are invited to browse and take whatever they would like from the rail. If anyone has any uniform that no longer fits, we would love to accept any donations to keep the rail stocked up!

We also have a small selection of coats available if needed.

Please help yourself.



Nursery Library

We're so excited to invite you and your child to enjoy our Nursery Lending Library, open every morning at drop-off time. It's a lovely opportunity to spend a few quiet moments together choosing a book to take home before entering the classroom.

If your child comes to breakfast club please hand your book bags to Penny or Aga who will support your to child choose a book they like!

Each child has their own special canvas book bag to keep their chosen stories safe at home. Children new to nursery will receive one soon. If you had one and it has it's gone missing, just let the school office know and we'll make sure you get a new one.

Any returned books should be placed in the basket labelled 'returned books.'

Sharing stories at home helps build your child's language, imagination, and love of reading – even a few minutes a day can make a big difference!

If you are not sure where the library is please ask.

Happy reading!



Tapestry Changes

We know that many of you enjoy seeing photos and updates about your child's time in nursery and we truly value your interest and engagement. However, we want to take this opportunity to explain how we will be using Tapestry going forward and why.

Our priority is always to ensure high-quality interactions between staff and children. This means that our team's focus is on playing with, talking to and supporting your children as they learn and grow - not on taking photos or writing observations throughout the day. If we were to create daily or even weekly posts for every child, this would take valuable time away from the children and their learning experiences.

From September, Tapestry will be used primarily as a **communication tool**. You can expect to see:

- **Posts about what children will be learning** in nursery, so you know what's happening and how to support this learning at home.
- **Ideas and suggestions for home learning**, play and development.
- Occasional updates to share '**wow**' moments - these are times when your child achieves something new or makes a particular step forward in their development.

You may not see regular, individual posts about your child, but please be assured that our team is closely observing and supporting their learning every day. Our staff are skilled in understanding and meeting each child's needs and helping them make progress across all areas of development.

We appreciate your understanding and support as we make this change. We are confident that this approach will help us to spend more meaningful time with your children while still keeping you informed and involved.

If you have any questions, please don't hesitate to speak to a member of the nursery team.



Messy Play!

We are learning all the time! Sometimes this means we will get a bit messy! We go outside whatever the weather, so we need warm clothes and coats that are ok to get dirty and wet! Please ensure your child is wearing weather appropriate, warm clothing as it is getting colder and we do play outside for as much of the day as possible!

The nursery uniform is designed to get messy so that favourite clothes don't get ruined! We have paint, water and other messy activities out everyday so wearing old clothes or uniform is a very good idea!!!

If you would like to bring your own wellies and waterproofs, please label them clearly with your child's name and they can be left at nursery to be used everyday! If your child comes to nursery wearing wellies, please could they have a spare pair of shoes in their bags to change into if necessary. Please can we also ask that children do not wear 'cros' style shoes for nursery as they are not safe for climbing. Thank you!

I'm sorry I got messy today but..

I've been exploring the water and learning about emptying, filling and pouring. Sometimes I might spill a little bit - the muscles in my hands are still developing.

There was flour in our messy area today. I was so interested in how it would make clouds if I threw a little into the air.

I loved the texture of the playdough, but I rested my arm on a little bit as I reached across the table. I didn't realise it would stick to my sleeve!

I was learning about what happens if I mix two colours together.. It's messy work, but the green paint on my jumper comes from the blue and yellow that I mixed!

This mark is from a pen. I'm trying really hard to learn to hold the pen and make marks on the paper.

The mud kitchen is very dirty, but it's so much fun! Playing there helps me develop my imagination and explore my understanding of the world. I watched you cook at home and I wanted to try by myself.



**Early
Childhood
and Family
Service**

Communication with the Nursery

If your child is unable to attend nursery due to illness or family outings etc. please call or email the office before your child's session is due to start. Our phone number is 01476 563966. Our email is enquiries@wyndhampark.lincs.sch.uk.

Please be aware that our admin staff are not all in the office everyday so if you email a specific member of staff directly, the message may not get through to nursery in time if it is not their day to work! For this reason we encourage you to use the enquiries@wyndhampark.lincs.sch.uk address.

When there is nobody in the office, there is an answerphone to respond to telephone calls. Please leave your name and a contact number along with your message.

The nursery also has a mobile number available for **text messages only**, which is 07543 715389. If your child is in Breakfast Club or After School Club, please use this number to contact staff out of our office hours.

We try to keep our website as up to date as possible and it has lots of information on www.wyndhamparknursery.co.uk The easiest way to get information out to everyone is through our Facebook and Instagram feeds - @WyndhamParkNurserySchool



Car Park & Gates

The nursery car park is for **staff parking ONLY**.



We are aware that the main Wyndham Park car park gets very busy at school collection times but for safeguarding reasons we must keep our car park closed as we use one half as a play ground for the Explorers Class. The Queen Elizabeth car park is open and Belton Lane has road side parking available and is just a short walk from nursery.



Keep clear

Please can we stress that even when the nursery gates are closed, they *must not be blocked*. The gates are in constant use and must be kept clear to allow for staff, deliveries and, if necessary, emergency services to enter and exit!

When the car park gates are closed, there is a pedestrian gate to access nursery. The pedestrian gate is located on Hill Avenue. There is a catch at the top of the gates that may need to be flipped over in order to push the gate open. See pictures below.



**** Applications for a Primary School Place - September 2025 ****

If your child was born between 1st September 2021 and 31st August 2022, you can apply for their Primary School place from 17th November 2025.

Please also be aware that the deadline for applying for a reception place in a primary school for September 2026 is 12:00 noon on 15th January 2026.

Important things to remember when applying:

- You can apply for up to **three** different schools. You must rank the schools in order of preference. The first school should be the one you would most like your child to go to.
- If you apply after the closing date you are less likely to get a place at one of your preferred schools.
- It is **your responsibility to apply for a primary school place for your child, we do not apply for you and we are not linked to any specific schools.**

It is really important that you apply online at:

www.lincolnshire.gov.uk/schooladmissions or contact the Education Team on 01522 782030.



Funding

Just a reminder that if you are claiming the 15 or 30 hour funding for working families (2-4 year olds) or using Tax-Free Childcare, you will need to reconfirm your eligibility **every 3 months**.

Parents can check whether they could be eligible for a range of government childcare offers, including 15 hours free funding for 2 year old's & 30 hours free funding for 2-4 year old's via the Childcare Calculator at www.gov.uk/childcare-calculator.

For a detailed guide to the 30 hours eligibility criteria, visit <https://www.gov.uk/government/publications/30-hours-free-childcare-eligibility>

Staying Safe

We take the safety of our children extremely seriously at Wyndham Park Nursery School. You can find out about our safeguarding policies and some useful e-safety information on our website.

We also help children to keep themselves safe through our practical curriculum. We learn about how to take care of ourselves and wash our hands, how to play nicely with each other and share, so we know how to stay safe.

If you are worried about your child or any other children then please come in and speak to us straight away or contact Lincolnshire Children Safeguarding Board on 01522 782111.

If you have any safeguarding concerns about children you can talk to:

Laura Cook - Designated Safeguarding Lead

Holly Stock-Cheekooree - Designated Safeguarding Lead

Sarah Smith & Georgina Crossland - Deputy Safeguarding Leads



E-Safety

If you would like to know more about e-safety, the website below has lots of useful information about how to keep children safe online, including top tips and recommended apps.

<https://www.internetmatters.org/advice/0-5>

**internet
matters.org**



Lincolnshire Children's Centres Lending Library

Our free Lending Library offers early years resources to support your child's development, bonding, and attachment, from pregnancy to age 5.



Family Hubs Lincolnshire

Swingbridge Children's Centre has a range of children's resources and equipment that you can borrow for free!

For more information, follow the link below or scan the QR code.

www.lincolnshire.gov.uk/lendinglibrary

Use the QR code to find out more information



Lincolnshire
COUNTY COUNCIL
Working for a better future

www.lincolnshire.gov.uk/lendinglibrary

start
For life

Family Corner

Family Corner is the family arm of the Early Years Alliance, offering free expert articles, activity ideas and online learning sessions on key areas of child development such as learning through play, communication, behaviour, health, nutrition and wellbeing.

The new website is now live!

The Early Years Alliance's Family Corner website has been relaunched to make it even easier for families to find:

- * Fun learning through play ideas and activities
- * Practical tips and guidance
- * Online family learning sessions and courses
- * A monthly newsletter

It's all in one place and all completely free. Explore the new site today: familycorner.co.uk



early years alliance

Dates for your diary

Monday 20th October - Parent's Evening (Face to face)

Thursday 23rd October - Nursery Photographer Day.

- Last day of Term 1



Monday 3rd November - First day back! Term 2

Monday 17th November - Applications for Primary school places open



Friday 19th December - Last day of Term 2.

NURSERY CLOSING AT 11.30AM - PARTY DAY

Merry Christmas!!!!



Tuesday 6th January - First day back! Term 3



Wyndham Park
Nursery School

Wyndham Park Nursery School

Hill Avenue

Grantham

Lincolnshire

NG31 9BB

Phone: 01476 563966

E-mail: enquiries@wyndhampark.lincs.sch.uk

Web: www.wyndhamparknursery.co.uk

EXCITE ENGAGE EDUCATE