



Wyndham Park
Nursery School

Our Newsletter

Spring Term

2026

EXCITE
ENGAGE
EDUCATE





Wyndham Park
Nursery School

As the Executive Headteacher overseeing the four maintained nursery schools within the Lincolnshire Maintained Nursery School Federation, I am privileged to work with such dedicated teams and wonderful children. While the Head of School at each nursery is your primary point of contact for the day-to-day running of the school, I want to reassure you that I am always available should the need arise. The school office will be more than happy to help arrange a time to speak with me if needed.

I am incredibly proud to be part of this federation, which brings so many benefits to our schools. By working closely together, we've been able to share expertise, resources and best practices to ensure that every child has the very best start in their early years. This collaboration strengthens each of our nurseries and enables us to meet the unique needs of every child and family we serve.

Thank you for your ongoing support and trust in our schools. It is a privilege to work with such vibrant communities and I look forward to continuing to build on our shared successes together.

Warm regards,



Laura Cook

Executive Headteacher

Lincolnshire Maintained Nursery School Federation

Hello again to our existing families - and a huge Wyndham Park welcome to the new families that have joined us since January. As some of you are new to us, this newsletter contains lots of information about life at Wyndham Park which we hope you will find useful.

The children have all settled in so well and there is such a lovely happy atmosphere around the nursery. The children have been so excited to explore all of the fun and exciting learning opportunities. It has also been good to see so many families now using our school library! If you have not yet visited please do come and borrow a library book to share with your child. You can swap it together as many times as you like! It is open every morning from 8.30am-8.45am or alternatively if you would like a member of staff to change it please just let us know.

If you have any questions or concerns about your child at Nursery and you would like to see a member of staff for a chat, just pop to the office or email and we will set up a mutually convenient time for you both. As you can imagine dropping off times and home times are particularly busy for staff as they are working hard keeping the children safe.

We look forward to another busy, fun filled term.



Warm wishes,

Holly Stock-Cheekooree

Head of School

Car Park & New Gate Systems



As you are aware, the nursery car park is for **staff parking ONLY**.

We have recently had a new electronic gate system fitted to the car park gates and pedestrian gate. Thank you for your patience as we have been dealing with the 'teething issues' of this new system!

The main reason for installing the new gates was safeguarding. We were becoming increasingly concerned that children and their families were using the car park gates, instead of the pedestrian gate, to access nursery when cars and delivery vehicles are coming in and out of an already busy car park.

With the new system in place, the car park gates will remain closed. The only entrance accessible to families is the pedestrian gate on Hill Avenue. **Please can we stress that nobody is permitted to walk through the car park gates even if they are open. This includes children arriving for Breakfast Club and leaving After School Club as we have members of staff driving through the gates at these times making it an extremely unsafe route.**



The pedestrian gate will be unlocked at the times listed below:

Morning drop off - 7.20am - 9.00am

Morning collection - 11.15am - 11.40am

Afternoon collection - 2.15pm - 6.00pm

Outside of these times, please press the buzzer on the intercom and a member of staff will let you in. To leave via the pedestrian gate, you will need to press the green button and pull the gate at the same time.



Please can we stress that when the car park gates are closed, they *must not be blocked*. The gates are in constant use and must be kept clear to allow for staff, deliveries and, if necessary, emergency services to enter and exit!
Thank you.



Dates for your Diary

Thursday 2nd April - Last day of Term 4!

Easter Holidays!



Thursday 16th April - Primary School offers released

Monday 20th April - **Staff Training Day - Nursery Closed**

Tuesday 21st April - First day back! Term 5

Monday 4th May - Bank Holiday - **Nursery Closed**

Friday 22nd May - Last day of Term 5! **May Half Term**

Monday 1st June - First day back! Term 6

Tuesday 21st July - Last Day of Term 6!

Summer Holidays!!!

Wednesday 22nd July - Wander Through Wyndham
Leavers Event - details to follow...

Missing Cars! 😞

The Adventurers Class recently got lots of new toy cars to play with! Unfortunately, the children love them so much that they appear to have 'borrowed' quite a few of them! Most cars are labelled on the bottom with 'WPNS'. Could we ask that if any of these cars have ended up in your child's pockets or bags, please could they be returned as soon as possible! 😊



If anyone has any little cars that they no longer need, we would welcome any donations too! Thank you!

Little Reminders!

- ☺ Please remember to label ALL of your child's clothing, including coats, bags, lunchboxes and shoes with their full name.
- ☺ Please ensure your child is wearing weather appropriate clothing as we do play outside for as much of the day as possible!
- ☺ Please do not send your child to nursery wearing jewellery as it could get lost or broken. Jewellery also creates a health & safety risk especially when children are using the climbing equipment. Thank you!
- ☺ If your child is toilet training, make sure they are wearing bottoms that they can pull up and down easily! Joggers are perfect instead of tights/leggings/trousers with buttons etc.
- ☺ Don't forget to let the office know by the start of the session if your child is not attending.

Wander Through Wyndham

It seems a long way off still but **Wednesday 22nd July** will be our special Leavers Event! All of the children who will be heading to Primary School in September will be invited in for a 'Wander Through Wyndham' morning.

This is a drop in event for families to say goodbye to their nursery friends and the staff while hunting through the nursery garden for special gifts to fill their goody bags!



The last day of normal nursery sessions will be **Tuesday 21st July 2026**.

More details to follow...

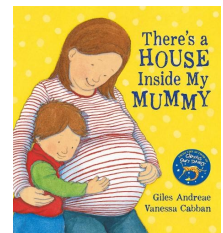
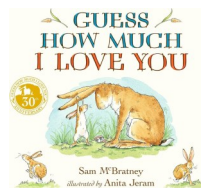
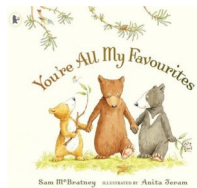
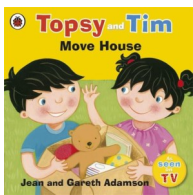
Family Lending Library

We are delighted to share some exciting news with our families! After the Easter holidays, we will be launching our brand-new *Family Lending Library*.

Our library will offer a carefully selected range of picture books that you and your family can request and borrow for free. These books are designed to support your child's well-being by helping you to gently explore and make sense of a wide range of emotions and life experiences together.

You will find books that thoughtfully support conversations around sensitive experiences such as moving house, welcoming a new sibling, toileting, and coping with grief and loss. We are always here to offer support, help and advice—please don't hesitate to ask.

We can't wait to share this wonderful resource with you.



Open Mornings

Next term, we will be holding some Open Days for any families with children wishing to join us from September.

We will be offering tours on the following dates:



- * **Wednesday 29th April between 9.30am - 11.00am**
- * **Thursday 14th May between 9.30am - 11.00am and 3.30pm - 5.00pm**
- * **Thursday 18th June between 9.30am - 11.00am and 3.30pm - 5.00pm**

If you know anyone who might be interested, please spread the word!

Places can be booked by emailing enquiries@wyndhampark.lincs.sch.uk or by calling 01476 563966.

Lunches

As you are aware, children attending a full day session need to bring a nutritional packed lunch with them.



Please ensure that any lunchboxes, bottles, tubs, spoons etc are clearly labelled with your child's full name!

Please remember that grapes & cherry tomatoes need to be cut in half length-ways or quartered as these are a choking risk for young children.

To protect milk teeth, children should only have water or milk to drink, and these are supplied by nursery. You do not need to send a drinks bottle with your child, however if you wish to send juice, this will ONLY be given at lunchtime.



Can we also ask that lunches **DO NOT CONTAIN ANY NUTS** due to allergies. Thank you.

Making pack-ups can sometimes be tricky.

See below for a range of quick, easy, healthier lunchbox ideas and tips.



Mix your slices

If your child does not like wholegrain, try making a sandwich from 1 slice of white bread and 1 slice of brown bread.



Always add veg

Cherry tomatoes, or sticks of carrot, cucumber, celery and peppers all count towards their 5 A Day. Adding a small pot of reduced-fat hummus or other dips may help with getting kids to eat vegetables.



Ever green

Always add salad to sandwiches and wraps too – it all counts towards your child's 5 A Day!



Cheesy does it...

Cheese can be high in fat and salt, so choose stronger-tasting ones – and use less of it – or try reduced-fat varieties.



Cut down on crisps

If your child really likes their crisps try reducing the number of times you include them in their lunchbox, and swap for plain rice cakes



Add bite-sized fruit

Try chopped apple, peeled satsuma segments, strawberries, blueberries, halved grapes or melon slices to make it easier for them to eat. Add a squeeze of lemon juice to stop it from going brown.



Tinned fruit counts too

A small pot of tinned fruit in juice – not syrup – is perfect for a lunchbox and easily stored in the cupboard.



Swap the fruit bars

Dried fruit like raisins, sultanas and dried apricots are not only cheaper than processed fruit bars and snacks but can be healthier too. Just remember to keep dried fruit to mealtimes as it can be bad for teeth.



Switch the sweets

Swap cakes, chocolate, cereal bars and biscuits for malt loaf, fruited teacakes, fruit breads or fruit (fresh, dried or tinned – in juice not syrup).



Yoghurts: go low-fat and lower-sugar

Pop in low-fat and lower-sugar yoghurts or fromage frais and add your own fruit.

Ready, Steady, Go to School!

This is a short fun filled session aimed at children who will be starting school in September. Come along to explore practical activities and top tips to help your little one on their journey to school.

Please contact the Children's Centre to book your place.

Sessions will be held at the Swingbridge Family Hub 30th April and 7th May - 1.00pm-2.30 pm



Speech & Language Drop in Sessions

If you are concerned about your child's speech, language and communication development, you can attend the drop in sessions at Swingbridge Children's Centre.

On attending a drop in session, your child's speech, language and communication development will be assessed by a member of the Speech and Language Therapy team and you will be provided with activities and strategies to help support your child's speech, language and communication needs as indicated.

You may be invited to attend further drop in group sessions where the team will provide strategies and activities to help you to develop your child's speech, language and communication skills.

This is a free service and runs every Friday between 10.00am-12.00pm.

Staying Safe

We take the safety of our children extremely seriously at Wyndham Park Nursery School. You can find out about our safeguarding policies and some useful e-safety information on our website.

We also help children to keep themselves safe through our practical curriculum. We learn about how to take care of ourselves and wash our hands, how to play nicely with each other and share, so we know how to stay safe.

If you are worried about your child or any other children then please come in and speak to us straight away or contact Lincolnshire Children Safeguarding Board on 01522 782111.

If you have any safeguarding concerns about children you can talk to:

Laura Cook - Designated Safeguarding Lead

Holly Stock-Cheekooree - Designated Safeguarding Lead

Sarah Smith & Georgina Crossland - Deputy Safeguarding Leads





Lincolnshire Children's Centres Lending Library

Our free Lending Library offers early years resources to support your child's development, bonding, and attachment, from pregnancy to age 5.



Family Hubs Lincolnshire

Swingbridge Children's Centre has a range of children's resources and equipment that you can borrow for free!

For more information, follow the link below or scan the QR code.

www.lincolnshire.gov.uk/lendinglibrary

Use the QR code to find out more information



Lincolnshire
COUNTY COUNCIL
Working for a better future

www.lincolnshire.gov.uk/lendinglibrary

start
for life

Warm Welcome Spaces Campaign

This Campaign wants everyone to find a place of belonging and reconnection at a Warm Welcome Space near their home. Warm Welcome Spaces offer the opportunity to make new friends and connect with the community. Why not explore your local Warm Welcome Space today?

For more information, please follow the link - [Warm Welcome Campaign](#)

Wyndham Park Visitor Centre



DOG FRIENDLY



CHILD FRIENDLY



ACCESSIBLE TOILETS



PARKING

The space is open to all and open 3 days a week: Tuesday, Thursday and Friday 11am - 3pm.

Wyndham Park Visitor Centre
Grantham, Lincolnshire NG31 9BA



Citizens Advice Drop In Sessions

Citizens Advice are here to help families with any problems they may have, such as income maximisation, benefits, housing, employment, relationships, debt and more.

Drop-in sessions are available at their offices on Monday and Thursday between 10am-12pm and pre-booked appointments are offered in the afternoon.

Citizens Advice South Lincolnshire
(Grantham) Address
70a Castlegate
Grantham



How to get support
Call

0808 278 7996

Visit the Website

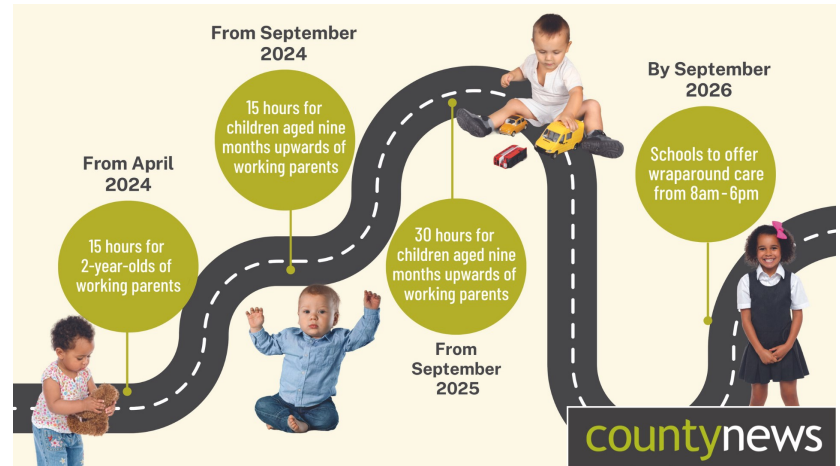
www.citizensadviceouthlincs.org.uk

Funding

Just a reminder that if you are claiming the 15 or 30 hour funding for working families (2-4 year olds) or using Tax-Free Childcare, **you will need to reconfirm your eligibility every 3 months.**

Parents can check whether they could be eligible for a range of government childcare offers, including 15 hours free funding for 2 year old's & 30 hours free funding for 9 month - 4 year old's on the Childcare Calculator at www.gov.uk/childcare-calculator.

For a detailed guide to the 30 hours eligibility criteria, visit <https://www.gov.uk/government/publications/30-hours-free-childcare-eligibility>



Communication with the Nursery

If your child is unable to attend nursery due to illness or family outings etc. please call or email the office before your child's session is due to start. Our phone number is 01476 563966. Our email is enquiries@wyndhampark.lincs.sch.uk.

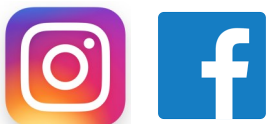
Please be aware that our admin staff are not all in the office everyday so if you email a specific member of staff directly, the message may not get through to nursery in time if it is not their day to work! For this reason we encourage you to use the enquiries@wyndhampark.lincs.sch.uk address.

When there is nobody in the office, there is an answerphone to respond to telephone calls. Please leave your name and a contact number along with your message.

The nursery also has a mobile number available for **text messages only**, which is 07543 715389. If your child is in **Breakfast Club** or **After School Club**, please use this number to contact staff out of our office hours.

We try to keep our website as up to date as possible and it has lots of information on www.wyndhamparknursery.co.uk

The easiest way to get information out to everyone is through our Facebook and Instagram feeds.



Messy Play!

We are learning all the time! Sometimes this means we will get a bit messy! We go outside whatever the weather, so we need warm clothes and coats that are ok to get dirty and wet!

The nursery uniform is designed to get messy so that favourite clothes don't get ruined! We have paint, water and other messy activities out everyday so wearing old clothes or uniform is a very good idea!!!

If you would like to bring your own wellies and waterproofs, please label them clearly with your child's name and they can be left at nursery to be used everyday! If your child comes to nursery wearing wellies, please could they have a spare pair of shoes in their bags to change into if necessary.

I'm sorry I got messy today but..

I've been exploring the water and learning about emptying, filling and pouring. Sometimes I might spill a little bit - the muscles in my hands are still developing.

There was flour in our messy area today. I was so interested in how it would make clouds if I threw a little into the air.

I loved the texture of the playdough, but I rested my arm on a little bit as I reached across the table. I didn't realise it would stick to my sleeve!

I was learning about what happens if I mix two colours together.. It's messy work, but the green paint on my jumper comes from the blue and yellow that I mixed!

This mark is from a pen. I'm trying really hard to learn to hold the pen and make marks on the paper.

The mud kitchen is very dirty, but it's so much fun! Playing there helps me develop my imagination and explore my understanding of the world. I watched you cook at home and I wanted to try by myself.



**Early
Childhood
and Family
Service**



Wyndham Park
Nursery School

Wyndham Park Nursery School
Hill Avenue
Grantham
Lincolnshire
NG31 9BB
Phone: 01476 563966
E-mail: enquiries@wyndhampark.lincs.sch.uk

EXCITE ENGAGE EDUCATE